

# PSCK, VFC-series Pressure switches, Flow control valve

Pressure: 350 bar

Flow: 7 l/min @ 350 bar

Voltage: 115 VAC, 24 VDC

- E** Presostatos
- F** Pressostats
- D** Druckschalter



## To control your hydraulic system

- Mounts directly into VP-series modular valves
- In-line installation
- Cartridge type flow control valve and pressure switches can be manifold mounted for remote use
- Lockable adjustment screw on PSCK models.

Shown: PSCK-8, VFC-3



## Options

**PB-1 Auxiliary block**

139 ▶



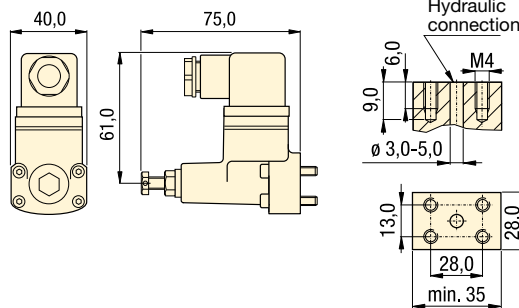
**Pressure reducing valves**

138 ▶



PSCK-8, 9

PSCK-8, 9 mounting dimensions

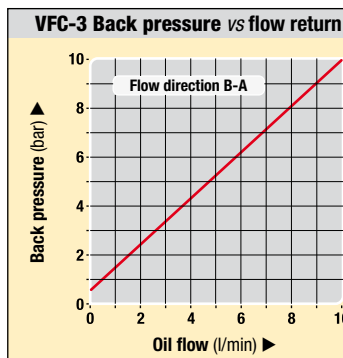


## PSCK-8, 9

Adjustable pressure switches will open or close electrical contacts when the desired pressure value is reached.

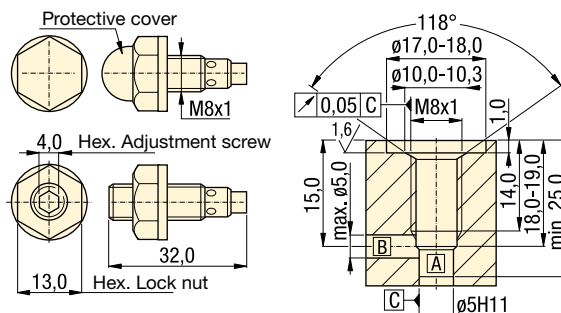
### Application

To open or close an electric circuit when a preset pressure value is reached. The electrical circuit is used to control further working cycles, such as actuating control valves or to terminate a working cycle. Directly mounted into Enerpac VP-series valves.



VFC-3

VFC-3 mounting dimensions



## VFC-3

Screw-in throttle type valve to control the amount of oil flow to the hydraulic cylinder.

### Application

Used to control cylinder speed in hydraulic circuits. Directly mounted into Enerpac VP-series valves or custom made manifolds for remote applications.

## Product selection

Solenoid voltage @ current	Model number	Hydraulic scheme	Pressure range	Deadband	Maximum oil flow
at 50/60 Hz			bar	bar	l/min
<b>▼ Pressure switch</b>					
24 VDC @ 2 A	PSCK-8		100 - 350	18 - 35	7
115 VAC @ 2 A					
<b>▼ Pressure switch</b>					
24 VDC @ 2 A	PSCK-9		20 - 210	6 - 15	7
115 VAC @ 2 A					
<b>▼ Flow control valve</b>					
screw-in throttle valve	VFC-3		0-350	-	7

■ PSCK-8 and VFC-3 directly mounted on VP-valves.



Pressure: 0 - 350 bar

Flow: 6 - 57 l/min

Voltage: 24 VDC, 110 VAC

- E** Electroválulas
- F** Electro distributeurs
- D** Elektromagnetische Ventile



## Options

D03 Manifolds  
MB-series

144 ▶

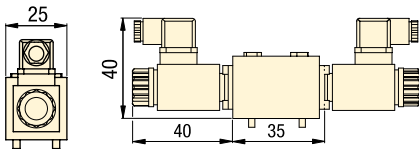


Fittings

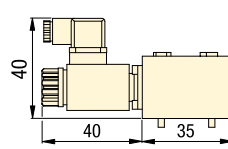
194 ▶



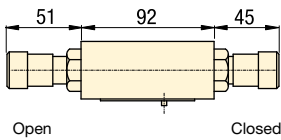
### VP03-11, 12, 21, 22



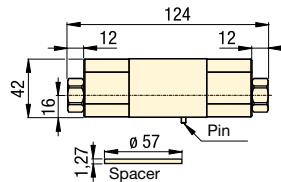
### VP03-51, 52



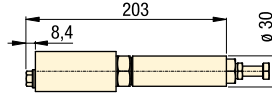
### VFC-4



### VD2P



### PRV-6, PRV-7



## Product selection

Valve flow path	Solenoid voltage 50/60 Hz	Model number	Hydraulic symbol	Pressure range	Maximum oil flow
				bar	l/min
4/3 closed center	24 VDC	VP03-11		0-350	19
4/3 closed center	110 VAC	VP03-12		0-350	19
4/3 float center	24 VDC	VP03-21		0-350	19
4/3 float center	110 VAC	VP03-22		0-350	19
4-way / 2-position	24 VDC	VP03-51		0-250	15
	110 VAC	VP03-52		0-250	15
Dual flow control	-	VFC-4		0-350	38
Dual pilot operated check valve	-	VD2P		0-350	57
Pressure reducing valve	-	PRV-6		30-300	12
	-	PRV-7		5-138	6

Shown: VP03



### VP03-series

VP03 valves are zero leakage, solenoid operated poppet valves.

### Application

Used to control the advance and retract of single acting and double acting cylinders.



### Important

VP03 series valves are zero leakage and can be used with pressure shut down electric pumps and air driven Turbo II pumps.

■ VP03-11 valve on PASG-3002SB Turbo pump.



Shown: VEX-11 valve



## VE-series

Spool style solenoid valves and control modules are used in circuits that do not require zero leakage.

### Application

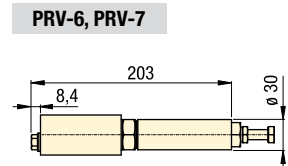
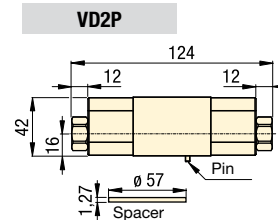
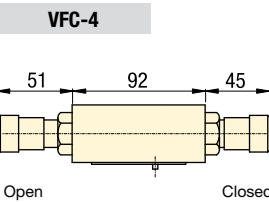
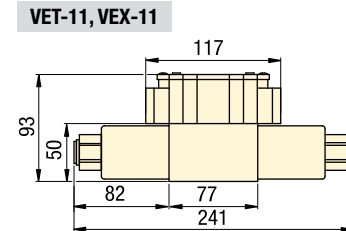
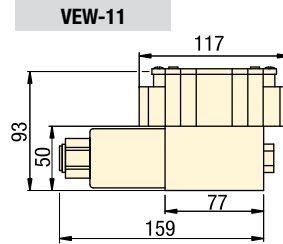
Used to control the advance and retract of single acting and double acting cylinders. The dual check valve can be used to lock pressure in a group of cylinders. The dual flow control offers independent control of cylinder advance and retract speeds. The pressure reducing valve sets a circuit pressure lower than the main pump pressure.

■ VEX-11 valve on ZW5020HG-FT21 pump.



## D03 Direction Valve and accessories

- D03 mounting pattern
- Directional valves
- Pilot operated check valve
- Dual flow control
- Pressure reducing valve



## Product selection

Valve flow path	Solenoid voltage 50/60 Hz	Model number	Hydraulic symbol	Pressure range	Pressure drop	Maximum oil flow
				bar	bar	l/min
4 way, 2 position	24 VDC 1,32 Amps	<b>VEW-11</b>		0-350	9	2,1
4/3 closed center	24 VDC 1,32 Amps	<b>VET-11</b>		0-350	10	2,1
4/3 float center	24 VDC 1,32 Amps	<b>VEX-11</b>		0-350	12	2,1
Dual flow control	-	<b>VFC-4</b>		0-350	-	2,6
Dual pilot operated check valve	-	<b>VD2P</b>		0-350	14	4,0
Pressure reducing valve	-	<b>PRV-6</b>		30-3000	-	0,8
		<b>PRV-7</b>		5-138		

Pressure: 0 - 350 bar

Flow: 0,8 - 4,0 l/min

Voltage: 24 VDC

- E** Electroválulas
- F** Electro distributeurs
- D** Elektromagnetische Ventile

## Options

D03 Manifolds MB-series

144 ▶



Fittings

194 ▶



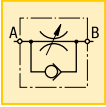
## Important

To hold the pressure in a clamping circuit, use the VEX11 valve with the VD2P check module. Do not use D03 spool valves with pressure shutdown pumps.

Max. Flow: 38 l/min

Pressure: 0 - 350 bar

- E** Válv. reguladoras de caudal
- F** Valves de control débit
- D** Stromregelventile



## Regulate the flow of oil

- Poppet valve design for zero leakage
- Color coded flow indicator
- Free flow return
- Fine metering capability
- Lockable
- Standard Viton seals

Shown: VFC-1



## Options

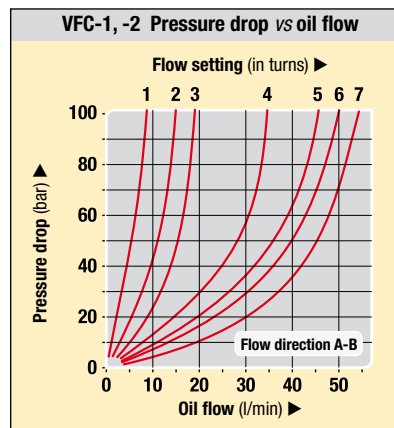
### Fittings

194 ▶



### High pressure filters

193 ▶



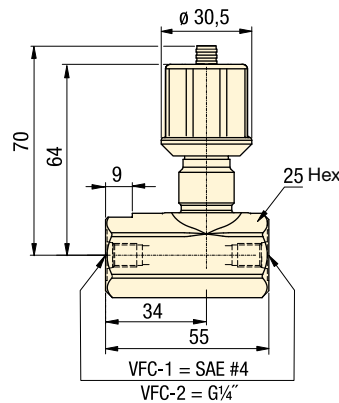
## VFC-series

Provide repeatable oil flow control. The internal check valve allows metered flow in one direction and free flow in the opposite direction. Precise control is achieved with a micro-meter style adjustment knob, which can be locked with the set screw.

### Application

Use VFC-series flow control valves in-line with the Enerpac WE-series workholding pump to protect your components from damage due to high flow rates.

VFC-1, -2



## Product selection

Maximum oil flow	Pressure range	Oil ports	Model number	Flow path	Maximum pressure drop	Weight
l/min	bar				bar	kg
<b>▼ Flow control valves</b>						
38	0-350	SAE#4	VFC-1		105	0,8
38	0-350	G 1/4"	VFC-2		105	0,8

Seal material: Viton

www.enerpacwh.com

■ In-line installation of a VFC-1 flow control valve.

