

ENERPAC 
 POWERFUL SOLUTIONS. GLOBAL FORCE.

**XC-SERIES
 CORDLESS
 PUMP**



CORDLESS CONVENIENCE



**Cylinders,
 Lifting Products
 & Systems**



**Pumps &
 Directional
 Control Valves**



**System Components
 & Control Valves**



Presses



Pullers



Tools



Bolting Tools



**Integrated
 Solutions**

Australia and New Zealand
 Actuant Australia Ltd.
 T +61 287 177 200 – F +61 297 438 648

Brazil
 Power Packer do Brasil Ltda.
 T +55 11 5687 2211
 Toll Free: 0800 891 5770

China
 Actuant (China) Industries Co.Ltd.
 T +86 0512 5328 7500
 F +86 0512 5335 9690
 Toll Free: +86 400 885 0369

**France, Switzerland, North Africa and
 French speaking African countries**
 ENERPAC
 Une division d'ACTUANT France S.A.S.
 T +33 1 60 13 68 68 – F +33 1 69 20 37 50

Germany and Austria
 ENERPAC GmbH
 T +49 211 471 490 – F +49 211 471 49 28

India
 Enerpac Hydraulics (India) Pvt. Ltd.
 T +91 80 3928 9000

Italy
 ENERPAC S.p.A.
 T +39 02 4861 111 – F +39 02 4860 1288

Japan
 Applied Power Japan LTD KK
 T +81 48 662 4911 – F +81 48 662 4955

Middle East, Egypt and Libya
 ENERPAC Middle East FZE
 T +971 4 8872686 – F +971 4 8872687

Norway
 ENERPAC Norway
 T +47 91 578 300

Russia
 Rep. office Enerpac
 T +7 495 98090 91 – F +7 495 98090 92

Southeast Asia, Hong Kong and Taiwan
 Actuant Asia Pte Ltd.
 T +65 68 63 0611 – F +65 64 84 5669
 Toll Free: +1800 363 7722

South Korea
 Actuant Korea Ltd.
 T +82 31 434 4506 – F +82 31 434 4507

Spain and Portugal
 ENERPAC SPAIN, S.L.
 T +34 91 884 86 06 – F +34 91 884 86 11

Sweden, Denmark, Finland and Iceland
 Enerpac Scandinavia AB
 T +46 (0) 771 415000

**The Netherlands, Belgium, Luxembourg,
 Central and Eastern Europe, Baltic States,
 Greece, Turkey and CIS countries**
 ENERPAC B.V.
 T +31 318 535 911 – F +31 318 535 848

Enerpac Integrated Solutions B.V.
 T +31 74 242 20 45 – F +31 74 243 03 38

**South Africa and other
 English speaking African countries**
 ENERPAC AFRICA (PTY) Ltd.
 T 0027 (0) 12 940 0656

United Kingdom and Ireland
 ENERPAC Ltd.
 T +44 1670 5016 50 – F +44 1670 5016 51

USA, Latin America and Caribbean
 ENERPAC
 T +1 262 293 1600 – F +1 262 293 7036

User inquiries: +1 800 433 2766
 Distributor inquiries/orders:
 T +1 800 558 0530 – F +1 800 628 0490

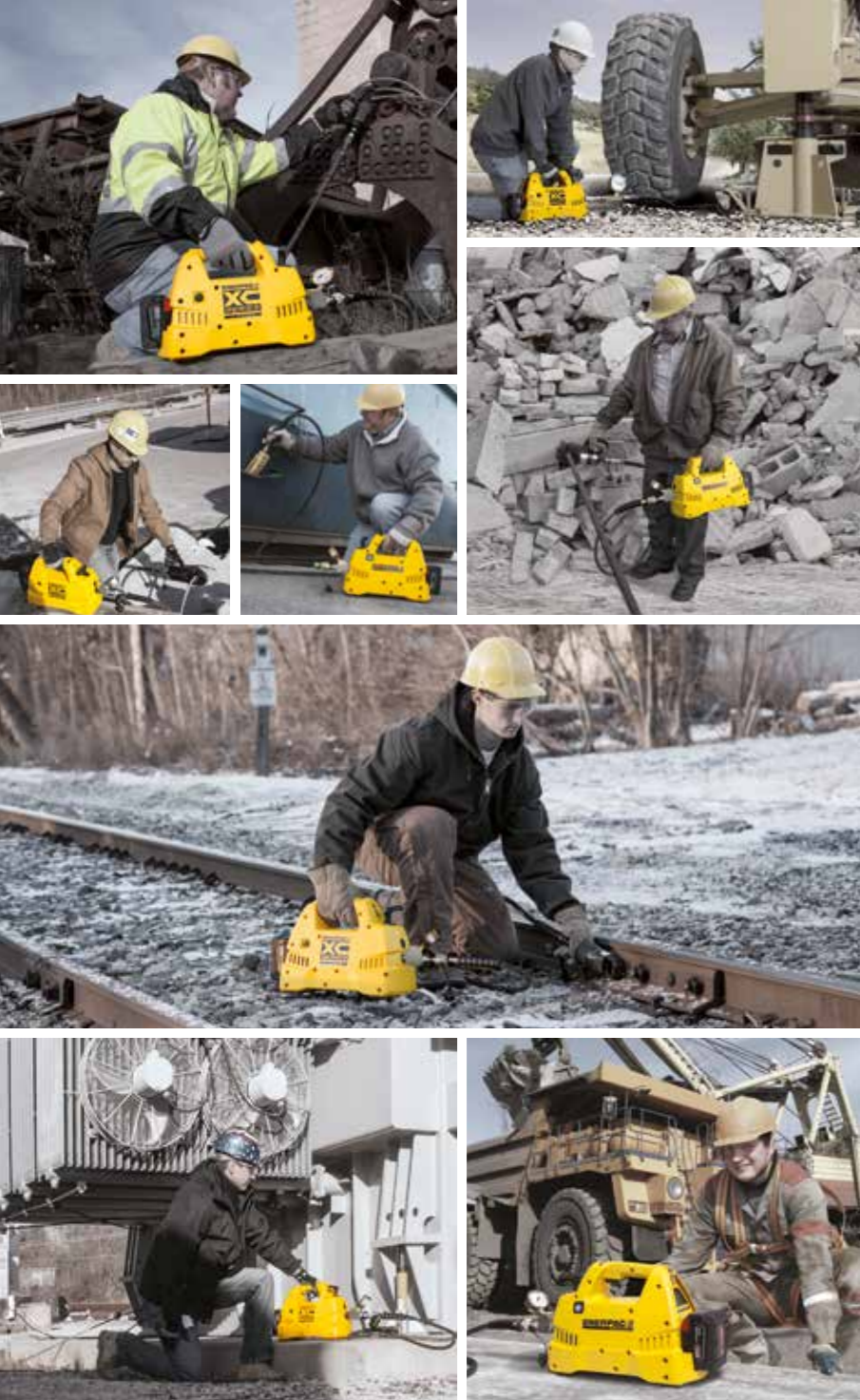
info@enerpac.com
 www.enerpac.com

9275 GB Enerpac © 02- 2016
 Subject to change without notice



XTREME PERFORMANCE

ENERPAC 
 POWERFUL SOLUTIONS. GLOBAL FORCE.



The performance of a powered pump.
The portability of a hand pump.

XC-SERIES CORDLESS PUMP



Single- or double-acting valve

Trigger lock-off

Integrated carrying handle

Ergonomic design

Impact-resistant composite housing

28 volt Li-ion battery

1- or 2-litre oil reservoir

Performance

- High speed**
- Up to 5x faster than manual pumps
 - Up to 2x faster than air powered pumps
- Long battery run time**
- Powerful battery delivers a high number of cycles per charge
 - Two batteries included in most models for heavy use applications
- Rugged design**
- Impact resistant composite material, built to perform in the toughest work environments.

Portability

- Lightweight**
- Weighs less than most common hand pumps
- Use in any position**
- Sealed, vent free reservoir
- Easy to transport**
- Removable shoulder strap and integrated carrying handle.

Safety

- Lock off switch**
- Trigger can be locked to prevent unwanted operation
- Cordless operation**
- Eliminates trip hazards from electrical cords and air hoses
- Ergonomic design**
- Lightweight, enclosed design with integrated handle and carrying strap allow for safe transportation.

Specifications

Maximum Pressure	700 bar
Oil Flow Rate	2,0 l/min at no load 0,25 l/min at full load
Oil Capacity	2,0 litres See catalogue for other options
Weight	11 kg with batteries, depending on model
Batteries	2 batteries and charger included unless noted

Model Number	Valve Type	Charger Voltage
XC1202MB	3-way, 2-pos.	115 V
XC1202ME	3-way, 2-pos.	230 V
XC1202M *	3-way, 2-pos.	—
XC1402MB	4-way, 3-pos.	115 V
XC1402ME	4-way, 3-pos.	230 V
XC1402M *	4-way, 3-pos.	—

* Batteries and charger not included.

Industrial grade battery technology

- 250 cuts of 10 mm reinforcing bar using a WHC-750 Cutter
- 112 lifts with a WR-5 Spreader
- 45 splits on M27 - 8.8 nuts using a NC-3241 Nut Cutter
- 30 lifts with a RC-104 cylinder.



Performance when and where you need it.

Learn more at www.enerpac.com/xc

XTREME PERFORMANCE

CORDLESS CONVENIENCE

ENERPAC
POWERFUL SOLUTIONS. GLOBAL FORCE.