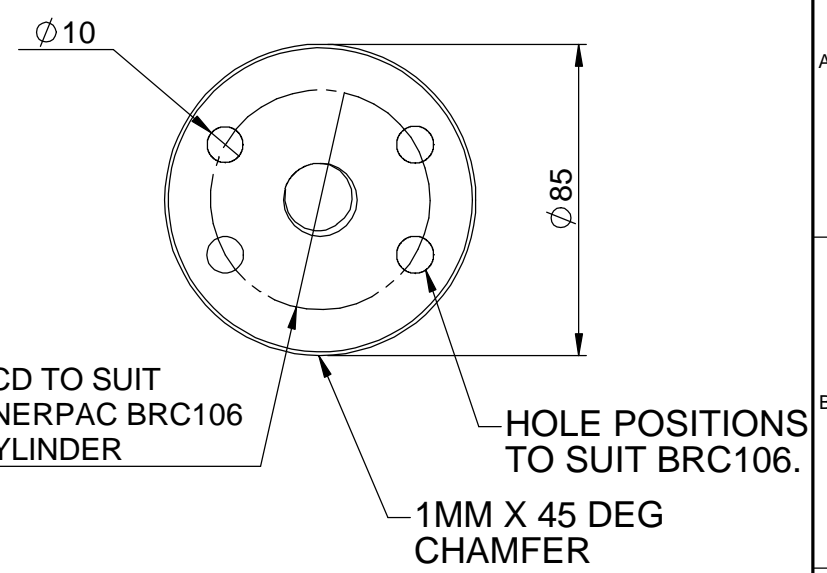
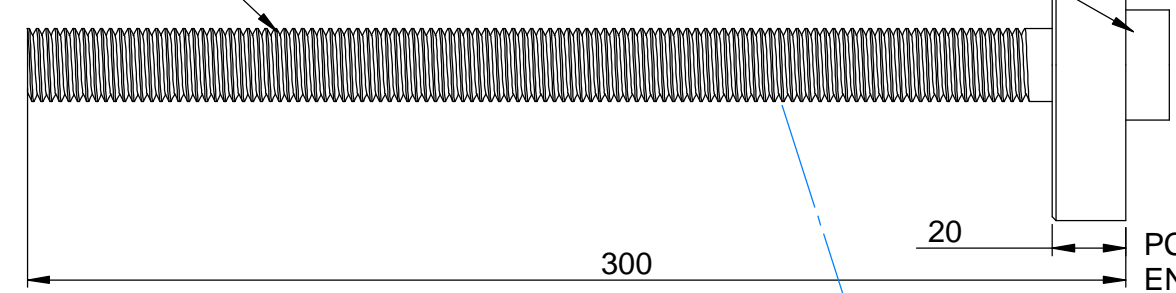


REV.	MODIFICATION	REVISED	DATE	CHECKED	DATE	APPROVED	DATE
A							

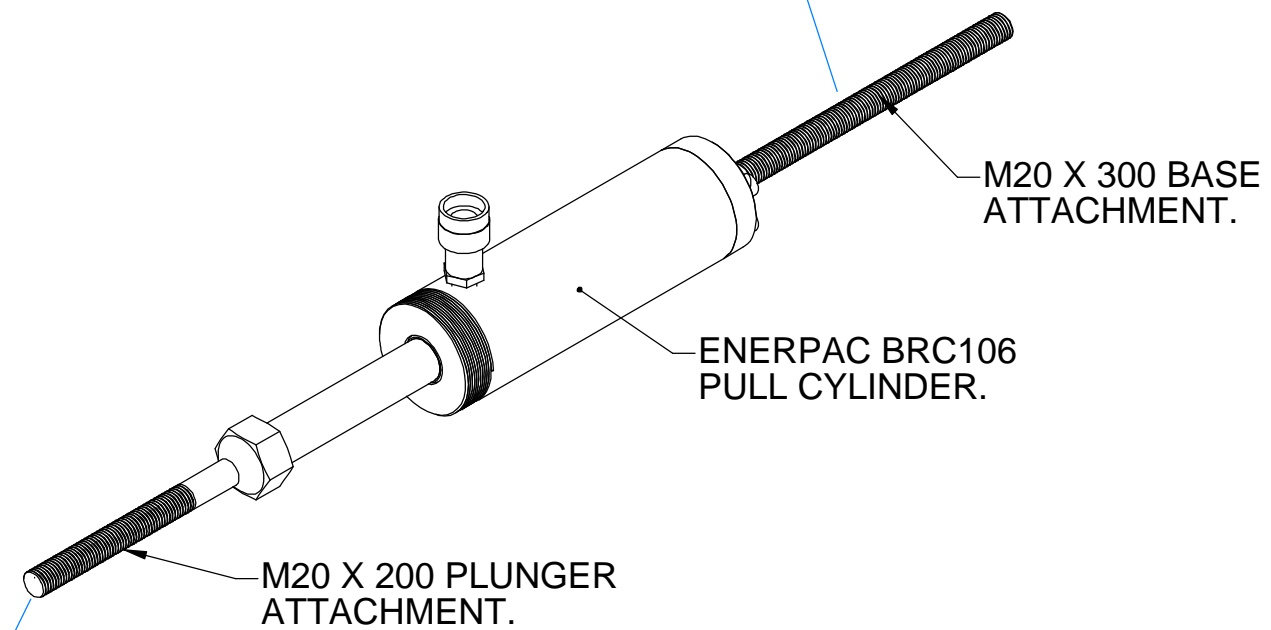
THREAD TO WITHIN 20MM OF PLATE

PASS M20 X 300 BOLT THROUGH PLATE, WELD & MACHINE HEAD TO  $\phi 25$

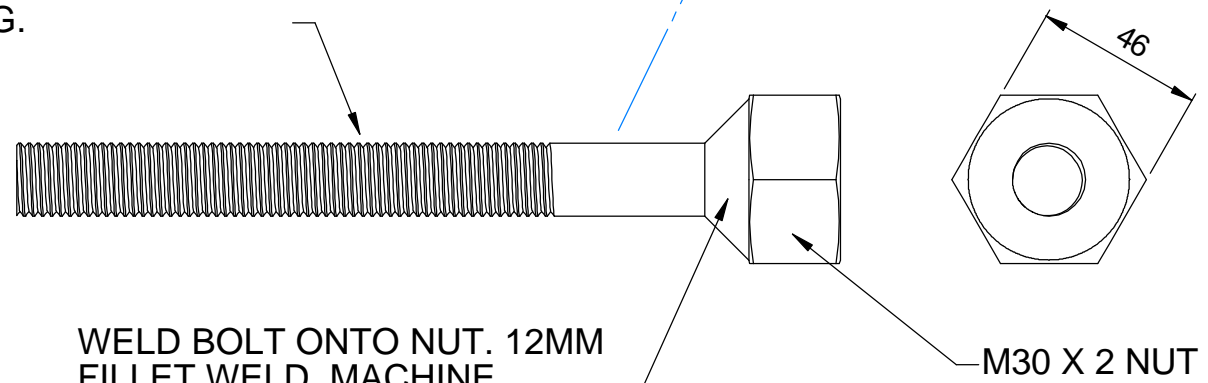


CYLINDER FORCE MUST NOT EXCEED 50kN. AFTER ASSEMBLY LOAD TEST TO 75kN FOR 15MINUTES. ENSURE NOT DEFORMATION BEFORE PAINTING.

PAINT MATT BLACK.



M20 X 200 BOLT. THREAD 150 LONG.



WELD BOLT ONTO NUT. 12MM FILLET WELD. MACHINE SMOOTH AFTER WELDING.

ALL BOLTS / FIXINGS USED TO BE GRADE 8.8.

NOTE:  
REV. "A"  
MODNOTE:  
DESCRIPTION:  
FIRST RELEASE

MATERIAL	SEE TEXT	GENERAL TOLERANCE REMOVE ALL SHARP EDGES UNSPECIFIED TOLERANCES	COPYRIGHT <small>THIS DRAWING IS THE PROPERTY OF "Hi-Press Hydraulics". IT MUST NOT BE REPRODUCED, USED FOR MANUFACTURE OR DISCLOSED TO A THIRD PARTY WITHOUT WRITTEN CONSENT.</small>	DRAWN: S Hartley DATE: 4/3/05	PROJECT STANDARD COMPONENTS	Hi-Press Hydraulics Ltd	
FINISH	MATT BLACK	LINEAR X $\pm 1$ mm X.X $\pm 0.5$ mm X.XX $\pm 0.1$ mm	ANGULAR DEG $\pm 1^\circ$ DEG MIN $\pm 0.1^\circ$	CHECKED: DATE:	TITLE BRC106 SPRING COMPRESSOR	Unit 2, Hall House Industrial Estate, New Hutton, Kendal, Cumbria. LA8 0AH Tel: 01539 734005	
WEIGHT(g)			PROJECTION 	APPROVED: DATE:	SCALE 1:5	A3	SHEET 1 OF 1
			DO NOT SCALE IF IN DOUBT ASK ALL DIMENSIONS IN MILLIMETRES		DRG. NO. STD025	REVN. A	