



# HI-PRESS HYDRAULICS Ltd

## MS-Series, Maintenance Sets

**ENERPAC**   
POWERFUL SOLUTIONS. GLOBAL FORCE.

▼ Shown: **MS2-10**



- All sets include Enerpac pump, hose, cylinder and gauge
- Lock-on or threaded connectors
- Complete maintenance set for almost every maintenance application.

## The Universal Hydraulic Tool Box



### Maintenance Sets

Enerpac Maintenance sets are a complete assortment of hydraulic powered tools. Using these sets allows you to quickly configure a unique tool to meet your most difficult jobs. Built around the Enerpac lightweight hand pump, hose and cylinder, these sets enable you to push, pull, lift, press, straighten, spread and clamp with forces up to 12,5 ton.



### More Information

For detailed information on all included attachments, see the next pages.

Page: 160

### ▼ QUICK SELECTION CHART

| Capacity using attachments*<br>ton (kN) | Set Model Number |       |         |                    |        |      | Number of Attachment Components | <br>(kg) |
|---|------------------|-------|---------|--------------------|--------|------|---------------------------------|----------|
| 2,5 (22)                                | <b>MS2-4</b>     | P-142 | HC-7206 | RC-55              | GP-10S | GA-4 | 35                              | 26       |
| 2,5 (22)                                | <b>MSFP-5</b>    | P-142 | HC-7206 | RC-55              | G2535L | GA-3 | 24                              | 20       |
| 5,0 (50)                                | <b>MSFP-10</b>   | P-392 | HC-7206 | RC-106             | G2535L | GA-3 | 22                              | 48       |
| 5,0 (50)                                | <b>MS2-10</b>    | P-392 | HC-7206 | RC-106             | GP-10S | GA-2 | 40                              | 63       |
| 12,5 (116)                              | <b>MS2-20</b>    | P-392 | HC-7206 | RC-256             | GP-10S | GA-2 | 19                              | 95       |
| 5,0-12,5 (50-116)                       | <b>MS2-1020</b>  | P-392 | HC-7206 | RC-102, -106, -256 | GP-10S | GA-2 | 59                              | 158      |

\* If no attachments are being used, capacity is double these values. Maximum operating pressure is then 700 bar.



**HI-PRESS HYDRAULICS LTD**  
RIVERSIDE WORKS,  
FORGE ROAD, WHALEY BRIDGE,  
HIGH PEAK, SK23 7HY

T: 01663 735089 - F: 01663 735090  
sales@hi-press.co.uk

**HI-PRESS HYDRAULICS LTD**  
UNIT 2, HALL HOUSE IND EST,  
NEW HUTTON, KENDAL,  
CUMBRIA, LA8 0AH

T: 01539 734005 - F: 01539 734006  
cumbria@hi-press.co.uk





# HI-PRESS HYDRAULICS Ltd

## Universal Maintenance Sets

**ENERPAC**   
POWERFUL SOLUTIONS. GLOBAL FORCE.



### CAUTION!

When cylinders are used with maintenance set attachments or components, the maximum system pressure must be limited to half the rated pressure (350 bar).



### WARNING!

Only use attachments provided with set. Non-Enerpac attachments and longer extension tubes will reduce column strength, potentially creating unsafe conditions.

## MS Series



Capacity (using attachments):  
**2,5 - 12,5 ton**

Maximum Operating Pressure:  
**350 bar**

### ▼ APPLICATION EXAMPLES



HI-PRESS HYDRAULICS LTD  
RIVERSIDE WORKS,  
FORGE ROAD, WHALEY BRIDGE,  
HIGH PEAK, SK23 7HY

T: 01663 735089 - F: 01663 735090  
sales@hi-press.co.uk

HI-PRESS HYDRAULICS LTD  
UNIT 2, HALL HOUSE IND EST,  
NEW HUTTON, KENDAL,  
CUMBRIA, LA8 0AH

T: 01539 734005 - F: 01539 734006  
cumbria@hi-press.co.uk






# HI-PRESS HYDRAULICS Ltd

## MS-Series, Maintenance Sets



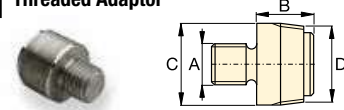
**CAUTION!** When cylinders are used with maintenance set attachments or components, the maximum system pressure must be limited to half the rated pressure (350 bar).

Note: All dimensions in millimetres.

| Set Model Number   | MS2-4          | MSFP-5         | MSFP-10        | MS2-10         | MS2-20          | MS2-1020                 |              |
|--|----------------|----------------|----------------|----------------|-----------------|--------------------------|--------------|
| <b>Base, Collar and Plunger Attachments</b>  | <b>2,5 ton</b> | <b>2,5 ton</b> | <b>5,0 ton</b> | <b>5,0 ton</b> | <b>12,5 ton</b> | <b>5,0 - 12,5 ton</b>    |              |
| <b>Cylinder Model(s)</b>   | <b>RC-55</b>   | <b>RC-55</b>   | <b>RC-106</b>  | <b>RC-106</b>  | <b>RC-256</b>   | <b>RC-102, 106, 256</b>  |              |
| <b>1</b>   | A-23           | A-23           | A-13           | A-13           | A-28            | A-13, A-28               |              |
| <b>2</b>   | A-25           | A-25           | A-21           | A-21           | A-27            | A-21, A-27               |              |
| <b>3</b>   | A-1034         | A-1034         | A-20           | A-20           | A-595           | A-20, A-595              |              |
| <b>4</b>   | MZ-4010        | MZ-4010        | A-14           | A-14           | A-243           | A-14, A-243              |              |
| <b>5</b>   | A-545          | A-545          | A-10           | A-10           | -               | A-10 (2x)                |              |
| <b>6</b>   | -              | -              | -              | A-8            | -               | A-8                      |              |
| <b>7</b>   | A-530          | A-530          | A-6            | A-6            | -               | A-6                      |              |
| <b>8</b>   | MZ-4011        | -              | -              | A-192          | -               | A-192                    |              |
| <b>9</b>   | -              | -              | -              | A-305          | -               | A-305                    |              |
| <b>10</b>  | A-531          | A-531          | A-18           | A-18           | -               | A-18                     |              |
| <b>11</b>  | -              | -              | -              | A-185          | -               | A-185                    |              |
| <b>12</b>  | A-532          | A-532          | A-15           | A-15           | -               | A-15                     |              |
| <b>13</b>  | -              | -              | -              | -              | A-607           | A-607                    |              |
| <b>14</b>  | A-629          | A-629          | A-129          | A-129          | -               | A-129                    |              |
| <b>15</b>  | A-539          | A-539          | A-128          | A-128          | -               | A-128                    |              |
| <b>Chains and Attachments for Pulling Applications</b>   | <b>2,5 ton</b> | <b>2,5 ton</b> | <b>5,0 ton</b> | <b>5,0 ton</b> | <b>12,5 ton</b> | <b>5,0 - 12,5 ton</b>    |              |
| <b>16</b>  | A-558          | -              | -              | A-132          | A-238           | A-132, A-238             |              |
| <b>17</b>  | -              | -              | -              | A-5 (2x)       | -               | A-5 (2x)                 |              |
| <b>18</b>  | A-557 (2x)     | -              | -              | A-141 (2x)     | A-218 (2x)      | A-141 (2x),<br>A-18 (2x) |              |
| <b>Extension Tubes, Connectors and Adaptors</b>  | <b>2,5 ton</b> | <b>2,5 ton</b> | <b>5,0 ton</b> | <b>5,0 ton</b> | <b>12,5 ton</b> | <b>5,0 - 12,5 ton</b>    |              |
| <b>19</b>  | A-544          | -              | -              | A-19 (2x)      | A-242 (2x)      | A-19 (2x)<br>A-242 (2x)  |              |
| <b>20</b>  | WR-5           | WR-5           | WR-5           | A-92           | -               | A-92                     |              |
| <b>21</b>  | MZ-4013 (4x)   | MZ-4013 (4x)   | A-16 (4x)      | A-16 (4x)      | -               | A-16 (4x)                |              |
| <b>22</b>  | MZ-4007 (3x)   | MZ-4007 (3x)   | MZ-1050 (2x)   | MZ-1050 (2x)   | -               | MZ-1050 (3x)             |              |
| <b>23</b>  | MZ-4008 (2x)   | -              | -              | MZ-1051        | -               | MZ-1051 (2x)             |              |
| <b>24</b>  | MZ-4009        | MZ-4009        | MZ-1052        | MZ-1052        | -               | MZ-1052                  |              |
| <b>25</b>  | -              | -              | -              | A-285          | -               | A-285                    |              |
| <b>26</b>  | A-650          | -              | -              | -              | -               | -                        |              |
| <b>27 Length (mm)</b>  | <b>76</b>      | <b>MZ-4002</b> | <b>MZ-4002</b> | -              | -               | -                        |              |
| <br>∅ 42,5 mm | 127            | MZ-4003        | MZ-4003        | MZ-1002        | MZ-1002         | -                        | MZ-1002      |
|  | 254            | MZ-4004        | MZ-4004        | MZ-1003        | MZ-1003         | A-239                    | MZ-1003      |
|  | 254            | -              | -              | -              | -               | -                        | A-239        |
|  | 457            | MZ-4005 (2x)   | MZ-4005 (2x)   | MZ-1004        | MZ-1004         | A-240                    | MZ-1004 (2x) |
|  | 457            | -              | -              | -              | -               | -                        | A-240        |
|  | 584            | MZ-4006 (2x)   | MZ-4006 (2x)   | -              | -               | -                        | -            |
| 762  | -              | -              | MZ-1005        | MZ-1005        | A-241           | MZ-1005 (2x)             |              |
| 762  | -              | -              | -              | -              | -               | A-241                    |              |
| <b>28 Storage Case</b>   | <b>CM-6</b>    | <b>CM-6</b>    | <b>CW-350</b>  | <b>CW-350</b>  | <b>CW-350</b>   | <b>MK-05</b>             |              |
| <b>Set Weight (kg)</b>   | <b>26</b>      | <b>20</b>      | <b>48</b>      | <b>63</b>      | <b>95</b>       | <b>158</b>               |              |

### Base, Collar and Plunger Attachments

#### 1 Threaded Adaptor



| ton  | Model Nr. | A              | B  | C  | D                   |
|------|-----------|----------------|----|----|---------------------|
| 2,5  | A-23      | 3/4" - 16 UN   | 28 | 26 | 3/4" - 14 NPT       |
| 5,0  | A-13      | 1" - 8 UN      | 31 | 42 | 1 1/4" - 11 1/2 NPT |
| 12,5 | A-28      | 1 1/2" - 16 UN | 47 | 69 | 2" - 11 1/2 NPT     |

#### 2 Base Attachment



| ton  | Model Nr. | A                   | B  | C  | D  |
|------|-----------|---------------------|----|----|----|
| 2,5  | A-25      | 3/4" - 14 NPT       | 50 | 12 | 44 |
| 5,0  | A-21      | 1 1/4" - 11 1/2 NPT | 57 | 12 | 65 |
| 12,5 | A-27      | 2" - 11 1/2 NPT     | 63 | 12 | 98 |

#### 3 Collar Toe



| ton  | Model Nr. | A               | B   | C  | D  |
|------|-----------|-----------------|-----|----|----|
| 2,5  | A-1034    | 1 1/2" - 16 UN  | 54  | 50 | 31 |
| 5,0  | A-20      | 2 1/4" - 14 UN  | 80  | 57 | 57 |
| 12,5 | A-595     | 3 5/16" - 12 UN | 103 | 51 | 80 |

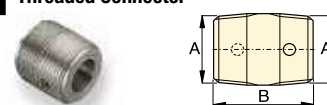
#### 4 Flat Base



| ton  | Model Nr. | A                   | B   | C  | D   |
|------|-----------|---------------------|-----|----|-----|
| 2,5  | MZ-4010   | 3/4" - 14 NPT       | 114 | 31 | 63  |
| 5,0  | A-14      | 1 1/4" - 11 1/2 NPT | 165 | 35 | 88  |
| 12,5 | A-243*    | 2" - 11 1/2 NPT     | 165 | 58 | 165 |

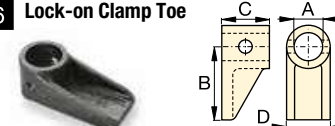
\* A-243 is a round base model.

#### 5 Threaded Connector



| ton | Model Nr. | A                   | B  |
|-----|-----------|---------------------|----|
| 2,5 | A-545     | 3/4" - 14 NPT       | 35 |
| 5,0 | A-10      | 1 1/4" - 11 1/2 NPT | 41 |

#### 6 Lock-on Clamp Toe



| ton | Model Nr. | A  | B   | C  | D  |
|-----|-----------|----|-----|----|----|
| 5,0 | A-8       | 43 | 105 | 50 | 57 |



HI-PRESS HYDRAULICS LTD  
RIVERSIDE WORKS,  
FORGE ROAD, WHALEY BRIDGE,  
HIGH PEAK, SK23 7HY

T: 01663 735089 - F: 01663 735090  
sales@hi-press.co.uk

HI-PRESS HYDRAULICS LTD  
UNIT 2, HALL HOUSE IND EST,  
NEW HUTTON, KENDAL,  
CUMBRIA, LA8 0AH

T: 01539 734005 - F: 01539 734006  
cumbria@hi-press.co.uk





# HI-PRESS HYDRAULICS Ltd

## Universal Maintenance Sets, MS-Series



**7 Threaded Plunger Toe**

| ton | Model Nr. | A                   | B  | C  | D  |
|-----|-----------|---------------------|----|----|----|
| 2,5 | A-530     | 3/4" - 14 NPT       | 57 | 25 | 33 |
| 5,0 | A-6       | 1 1/4" - 11 1/2 NPT | 82 | 31 | 57 |

**14 Wedge Head**

| ton | Model Nr. | A                   | B   | C  | D  |
|-----|-----------|---------------------|-----|----|----|
| 2,5 | A-629     | 3/4" - 14 NPT       | 69  | 33 | 28 |
| 5,0 | A-129     | 1 1/4" - 11 1/2 NPT | 101 | 50 | 44 |

**20 Spreader**

| ton | Model Nr. | A              | B   | C    | D   |
|-----|-----------|----------------|-----|------|-----|
| 1,0 | WR-5      | —              | 223 | 12,8 | 94  |
| 1,0 | A-92      | 2 1/4" - 14 UN | 244 | 35   | 158 |

**8 Collar Clamp Head**

| ton | Model Nr. | A             | B  | C  | D              |
|-----|-----------|---------------|----|----|----------------|
| 2,5 | MZ-4011   | 3/4" - 14 NPT | 49 | 76 | 1 1/2" - 16 UN |
| 5,0 | A-192     | —             | 42 | 63 | 50             |

**15 Rubber Flex Head**

| ton | Model Nr. | A                   | B  | C  |
|-----|-----------|---------------------|----|----|
| 2,5 | A-539     | 3/4" - 14 NPT       | 44 | 69 |
| 5,0 | A-128     | 1 1/4" - 11 1/2 NPT | 86 | 86 |

**21 Lock Pin**

| ton | Model Nr. | A    | B  |
|-----|-----------|------|----|
| 2,5 | MZ-4013   | 7,9  | 41 |
| 5,0 | A-16      | 11,2 | 82 |

**9 Spreader Toe**

| ton | Model Nr. | A                   | B   | C  | D  |
|-----|-----------|---------------------|-----|----|----|
| 5,0 | A-305     | 1 1/4" - 11 1/2 NPT | 114 | 25 | 50 |

**Chains and Attachments for Pulling**

**16 Single Chain Plate**

| ton  | Model Nr. | A               | B   | C   | D   |
|------|-----------|-----------------|-----|-----|-----|
| 2,5  | A-558     | 1 1/2" - 16 UN  | 196 | 39  | 44  |
| 5,0  | A-132     | 2 1/4" - 14 UN  | 307 | 63  | 79  |
| 12,5 | A-238     | 3 5/16" - 12 UN | 450 | 102 | 125 |

**22 Lock-on Connector**

| ton | Model Nr. | A  | B   |
|-----|-----------|----|-----|
| 2,5 | MZ-4007   | 19 | 79  |
| 5,0 | MZ-1050   | 33 | 127 |

**10 Serrated Saddle**

| ton | Model Nr. | A                   | B  | C  |
|-----|-----------|---------------------|----|----|
| 2,5 | A-531     | 3/4" - 14 NPT       | 27 | 31 |
| 5,0 | A-18      | 1 1/4" - 11 1/2 NPT | 38 | 50 |

**17 Double Chain Plate**

| ton | Model Nr. | A                   | B   | C  | D   |
|-----|-----------|---------------------|-----|----|-----|
| 5,0 | A-5       | 1 1/4" - 11 1/2 NPT | 130 | 50 | 126 |

**23 Male Lock-on Adaptor**

| ton | Model Nr. | A                   | B  | C  |
|-----|-----------|---------------------|----|----|
| 2,5 | MZ-4008   | 3/4" - 14 NPT       | 60 | 19 |
| 5,0 | MZ-1051   | 1 1/4" - 11 1/2 NPT | 90 | 33 |

**11 Smooth Saddle**

| ton | Model Nr. | A                   | B  | C  |
|-----|-----------|---------------------|----|----|
| 5,0 | A-185     | 1 1/4" - 11 1/2 NPT | 38 | 50 |

**18 Chain with Hook**

| ton  | Model Nr. | Chain Length |
|------|-----------|--------------|
| 2,5  | A-557     | 1,5 metres   |
| 5,0  | A-141     | 1,8 metres   |
| 12,5 | A-218     | 2,4 metres   |

**24 Female Lock-on Adaptor**

| ton | Model Nr. | A                   | B  | C  |
|-----|-----------|---------------------|----|----|
| 2,5 | MZ-4009   | 3/4" - 14 NPT       | 65 | 19 |
| 5,0 | MZ-1052   | 1 1/4" - 11 1/2 NPT | 96 | 33 |

**12 90° V-Base**

| ton | Model Nr. | A                   | B  | C  | D  |
|-----|-----------|---------------------|----|----|----|
| 2,5 | A-532     | 3/4" - 14 NPT       | 38 | 47 | 25 |
| 5,0 | A-15      | 1 1/4" - 11 1/2 NPT | 54 | 57 | 54 |

**Tubes, Connectors and Adaptors**

**19 Pipe Coupling**

| ton  | Model Nr. | A                   | B  | C  |
|------|-----------|---------------------|----|----|
| 2,5  | A-544     | 3/4" - 14 NPT       | 42 | 33 |
| 5,0  | A-19      | 1 1/4" - 11 1/2 NPT | 49 | 54 |
| 12,5 | A-242     | 2" - 11 1/2 NPT     | 88 | 82 |

**25 Adjustable Extension**

| ton | Model Nr. | A                   | B   | C   | D  |
|-----|-----------|---------------------|-----|-----|----|
| 5,0 | A-285     | 1 1/4" - 11 1/2 NPT | 335 | 441 | 33 |

**13 Plunger Base**

| ton  | Model Nr. | A               | B   | C  |
|------|-----------|-----------------|-----|----|
| 12,5 | A-607     | 2" - 11 1/2 NPT | 166 | 38 |

**26 Slip-on Extension**

| ton | Model Nr. | A             | B   | C   |
|-----|-----------|---------------|-----|-----|
| 2,5 | A-650     | 3/4" - 14 NPT | 200 | 365 |



HI-PRESS HYDRAULICS LTD  
RIVERSIDE WORKS,  
FORGE ROAD, WHALEY BRIDGE,  
HIGH PEAK, SK23 7HY

T: 01663 735089 - F: 01663 735090  
sales@hi-press.co.uk

HI-PRESS HYDRAULICS LTD  
UNIT 2, HALL HOUSE IND EST,  
NEW HUTTON, KENDAL,  
CUMBRIA, LA8 0AH

T: 01539 734005 - F: 01539 734006  
cumbria@hi-press.co.uk

