

Torque Wrench

SQUARE DRIVE SQV SERIES

40.200 Nm

Max Torque
700 bar

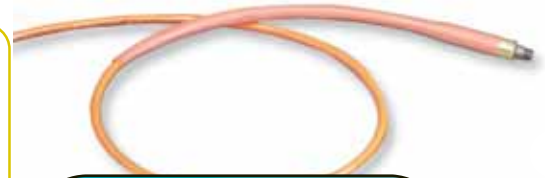
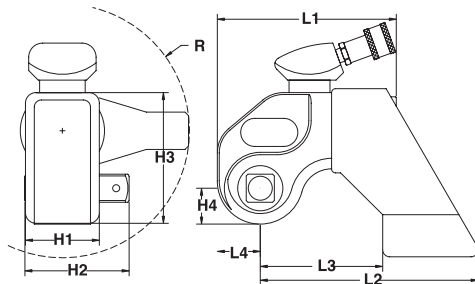
Unibody design with anti-lock pawl system. Engineered with precision machining and strong alloys.

HYDRAULIC TOOLS



SQUARE DRIVE TORQUE WRENCHES – DOUBLE ACTING

- 360° uni-swivel and 60 point, 360° reaction arm
- Exclusive precision-tooth ratchet for accuracy
- One-piece, bind-free, push-through drive
- Exclusive radius, throat, and head contour for fit
- Long stroke design with anti-lock feature
- Hands-free operation for safety



HOSES – DUAL LINE

TWH5E	5 m, 6,4 mm ID polyurethane
TWH20	6 m, 9,5 mm ID non-conductive
TWH50	15 m, 9,5 mm ID non-conductive

Tool Model	L1 (mm)	L2 (mm)	L3 (mm)	L4 (mm)	H1 (mm)	H2 (mm)	H3 (mm)	H4 (mm)	R (mm)
SQV06PT	104	126	71	26	42	63	76	21	72
SQV2PT	125	151	87	30	50	71	90	25	86
SQV4PT	162	198	111	39	67	95	119	32	114
SQV8PT	220	268	151	53	91	131	167	47	155
SQV12PT	243	296	167	58	100	141	179	49	172
SQV30PT	344	423	238	84	144	209	256	71	247

Tool Model	Square Drive (in.)	Max. Torque - Min. Torque (Nm)	Tool Weight (kg)
SQV06PT*	3/4	815 – 95	1,09
SQV2PT	3/4	1.560 – 240	2,09
SQV4PT	1	4.090 – 620	4,58
SQV8PT	1-1/2	11.600 – 1.880	11,70
SQV12PT	1-1/2	14.915 – 2.240	13,84
SQV30PT*	2-1/2	40.675 – 4.000	31,30

* Indicates spline drive.