

# Torque Wrench

SQUARE DRIVE YSERIES

MAX TORQUE 14.000Nm

700 bar

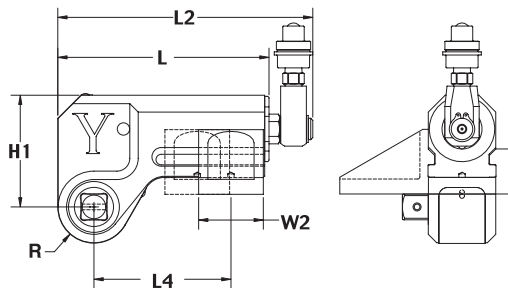
Heavy duty simple-to-use. Accuracy and speed under load. Breaking nuts loose and torquing.

## ECONOMICAL SQUARE DRIVE TOOL

- 2-point reaction arm
- Torsion resistant housing
- One-piece, slide-through square drive
- Single Acting



HYDRAULIC TOOLS



| Tool Model | H1 (mm) | L1 (mm) | L2 (mm) | L4 (mm) | R (mm) | HEAD WIDTH (mm) | W2 (mm) |
|------------|---------|---------|---------|---------|--------|-----------------|---------|
| Y1PT       | 86      | 135     | 172     | 102     | 28     | 51              | 51      |
| Y3PT       | 115     | 178     | 216     | 137     | 38     | 67              | 64      |
| Y5PT       | 146     | 229     | 277     | 182     | 48     | 89              | 77      |
| Y8PT       | 153     | 237     | 285     | 191     | 51     | 93              | 89      |
| Y10PT      | 172     | 261     | 305     | 204     | 55     | 99              | 96      |

| Tool Model | Square Drive in. | Max. Torque - Min. Torque (Nm) | Tool Weight (kg) |
|------------|------------------|--------------------------------|------------------|
| Y1PT       | 3/4              | 14130 - 230                    | 2,54             |
| Y3PT       | 1                | 4015 - 585                     | 5,67             |
| Y5PT       | 1-1/2            | 7594 - 1120                    | 12,52            |
| Y8PT       | 1-1/2            | 11119 - 1640                   | 14,34            |
| Y10PT      | 1-1/2            | 14130 - 1980                   | 17,78            |