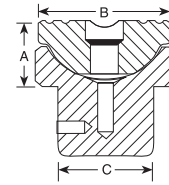
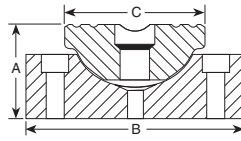


Accessories

Swivel Caps Center Hole Accessories

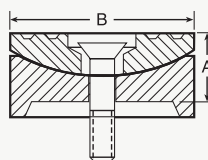
CYLINDERS



SWIVEL CAPS FOR "RSS",					
Use with Cyl. No.	Swivel Cap Order No.	Wt. (lbs.)	A (in.)	B (in.)	C (in.)
RSS101	350320	0.5	1	1 ⁷ / ₁₆	1 ⁷ / ₁₆
RSS202	350321	1.3	1 ³ / ₈	2 ¹ / ₈	2 ¹ / ₈
RSS302	350322	1.6	1 ³ / ₈	2 ¹ / ₂	2 ¹ / ₈
RSS502	350331	2.7	1 ⁷ / ₁₆	3 ¹ / ₄	2 ¹ / ₈
RSS1002	350332	6.6	1 ¹³ / ₁₆	4 ³ / ₈	3 ³ / ₈
Tonnage		"RA" CYLINDERS			
55	350376	2	1 ¹ / ₄	2 ¹³ / ₁₆	2 ¹³ / ₁₆
100	350984	5.6	1 ¹⁵ / ₁₆	3 ¹ / ₈	3 ³ / ₄

SWIVEL CAPS FOR "RD" CYLINDERS					
Cylinder Tonnage	Swivel Cap Order No.	Prod. Wt. (lbs.)	A (in.)	B (in.)	C (in.)
10	350144	0.8	⁷ / ₈	1 ⁷ / ₁₆	⁵⁵ / ₆₄
25	350145	1.3	1 ¹ / ₈	2 ¹ / ₈	1 ⁷ / ₁₆
55	351325	4.2	2 ⁷ / ₁₆	2 ¹ / ₂	1 ³⁵ / ₆₄
100	351324	11.2	2 ⁶¹ / ₆₄	3 ³ / ₄	2 ²¹ / ₃₂
150	351334	12.8	2 ⁵ / ₈	4 ³ / ₈	3 ¹ / ₁₆

SWIVEL CAPS									
For use with "RC" cylinders			Reduce the effects of off center loading. Tilts up to 5 degrees. Radial grooves on top of cap reduce load slippage.				For use with "RL" cylinders		
Use with Cyl. No.	Swivel Cap Order No.	Wt. (lbs.)	A (in.)	B (in.)	A (in.)	B (in.)	Use with Cyl. No.	Swivel Cap Order No.	Wt. (lbs.)
150-200 ton	420867	8.8	1 ¹ / ₂	5 ¹ / ₈	1	2 ¹³ / ₁₆	55-100 ton	420866	1.8
280 ton	420868	13.5	1 ³ / ₄	5 ⁷ / ₈	1 ¹ / ₂	5 ¹ / ₈	150-200 ton	420867	8.8
355 ton	420869	37	2 ³ / ₄	7 ¹¹ / ₁₆	1 ³ / ₄	5 ⁷ / ₈	280 ton	420868	13.5
435 ton	420870	52	3 ¹ / ₈	8 ⁷ / ₈	2 ³ / ₄	7 ¹¹ / ₁₆	355 ton	420869	37
565 ton	420871	78	3 ⁵ / ₈	9 ⁷ / ₈	3 ¹ / ₈	8 ⁷ / ₈	435 ton	420870	52
					3 ⁵ / ₈	9 ⁷ / ₈	565 ton	420871	78



Reduce the effects of off center loading. Tilts up to 5 degrees. Radial grooves on top of cap reduce load slippage. Notch across face of each cap helps keep loads having a protruding or round shaped centered.

"CENTER-HOLE" CYLINDER ACCESSORIES				
To use with Cyl. No.	RT172, RH203	RT302, RH302 RH303, RH306	RT503, RH503, RH603 RH605, RH606	RT1004
Order Set No.	RHA20	RHA30	RHA50	RHA100
1 Speed Crank	1 24814	27198	29595	303785
2 Speed Nut	2 302482	302483	33439	34136
3 Adjusting Screw	3 32118	34758	32698	32699
4 Threaded Insert	4	Order threaded insert for RH series cylinders with the accessory set. (See page 35). Threaded insert supplied with RT series cylinders		
5 Pushing Adapter	5 201923	34510	34755	—
6 Pushing Adapter	6 201454	34511	34756	—
7 Jack Screw	7 24813	25931	32701	32702
8 Screw Cap	8 28228	28229	28230	—

