

▼ Shown from top to bottom: PA-1150, PA-133



## PA Series

Reservoir Capacity:  
**0,6-1,3 litres**

Flow at Rated Pressure:  
**0,13 l/min**

Air Consumption:  
**255 l/min**

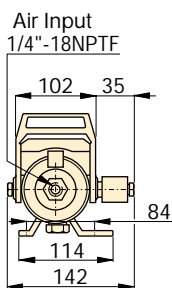
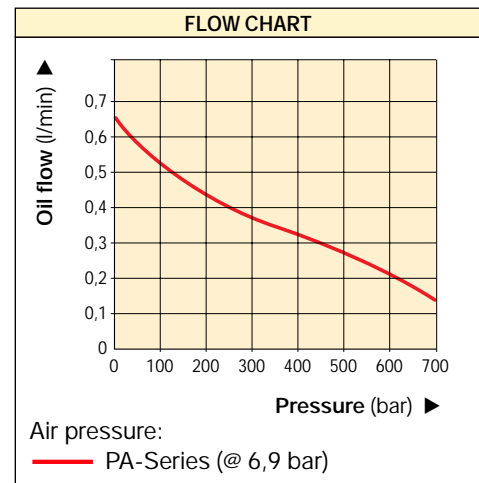
Maximum Operating Pressure:  
**700 bar**



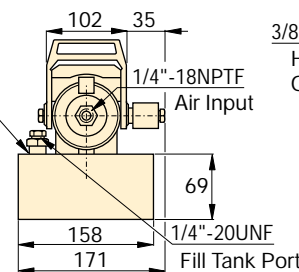
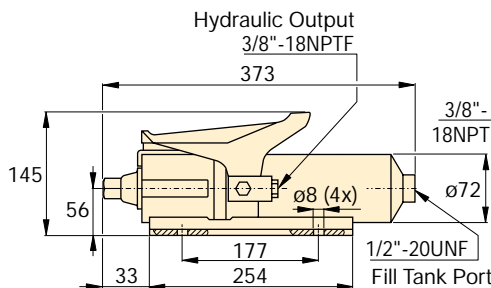
### PC-66 Reservoir Conversion Kit

Double the reservoir capacity of your existing PA-133 with this easy to install conversion kit.

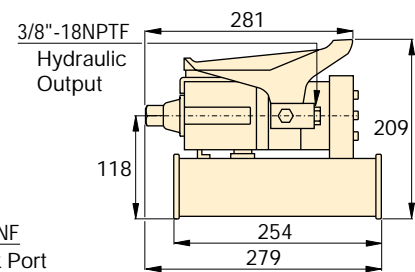
- Rugged construction – built for long life and easy service
- Swivel coupling simplifies hydraulic connection and pump operation
- Three-position treadle provides cylinder advance, hold or retract operation
- Operates in all positions for increased versatility in use and mounting (except PA-1150)
- Base mounting slots provided on PA-133.



PA-133 (mm)



PA-1150 (mm)



Used with Cylinder	Usable Oil Capacity (cm <sup>3</sup> )	Model Number	Pressure Rating (bar)	Output Flow Rate (l/min)		Valve Function	Air Pressure Range* (bar)	Air Consumption (l/min)	Sound Level (dBA)	Weight (kg)
				No load	Load					
Single-Acting	589	PA-133	700	0,65	0,13	Advance/Hold/Retract	4,1 - 8,3	255	85	5,4
	1311	PA-1150	700	0,65	0,13	Advance/Hold/Retract	4,1 - 8,3	255	85	8,2

\* Recommended Regulator-Filter-Lubricator: RFL-102.