

▼ Shown from left to right: RAR-5010, RAR-308, RAR-204



- Composite bearings prevent metal-to-metal contact, increasing cylinder life and resistance to side-loads of up to 10%
- Hard-Coat finish on all surfaces resists damage and extends cylinder life
- Handles standard on all models
- Steel base plate and saddle for protection against load-induced damage
- Integral stop ring prevents plunger over-travel and is capable of withstanding the full cylinder capacity
- Built-in safety valve prevents accidental over-pressurization
- Double-acting for rapid retraction, regardless of hose lengths or system losses

Portable Power Lifters for Double-Acting Applications



Saddles

All RAR-cylinders are equipped with bolt-on removable hardened steel saddles. For Tilt Saddles see

next page.

Page: 21



Hoses

Enerpac offers a complete line of high quality hydraulic hoses. To ensure the integrity of your system, specify only Enerpac hydraulic hoses.

Page: 122



Remote Lifting

For heavy lifting in remote locations use the Enerpac ZE-Series electric pumps. A double-acting cylinder

must be powered by a pump with a 4-way valve.

Page: 90

▼ RAR-cylinder used in a stage lift application.



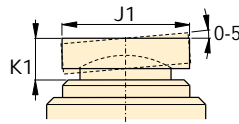
▼ SELECTION CHART

Cylinder Capacity @ 700 bar ton	Stroke (mm)	Model Number *	Maximum Cylinder Capacity (kN)		Cylinder Effective Area (cm ²)		Oil Capacity (cm ³)	
			Push	Pull	Push	Pull	Push	Pull
50	50	RAR-502	496	187	70,9	26,7	354	134
	100	RAR-504	496	187	70,9	26,7	709	267
	150	RAR-506	496	187	70,9	26,7	1063	401
100	100	RAR-1004	1002	557	143,1	79,5	1431	795
	150	RAR-1006	1002	557	143,1	79,5	2147	1193
	200	RAR-1008	1002	557	143,1	79,5	2863	1590
150	150	RAR-1506	1589	924	227,0	132,0	3405	1980

* Note: Every RAR-cylinder is available with a stroke of 50, 100, 150, 200 and 250 mm.

Double-Acting, Aluminium Cylinders

Optional Bolt On Tilt Saddle Dimensions (mm)			
For Cylinder Model / Capacity ton	Tilt Saddle Model Number	Tilt Saddle Diameter J1	Saddle Protrusion from Plunger K1
RAR-50	CATG-50	50	24
RAR-100	CATG-150	91	31
RAR-150	CATG-200	118	35



RAR Series



Capacity:
50-150 ton

Stroke:
50 - 200 mm

Maximum Operating Pressure:
700 bar

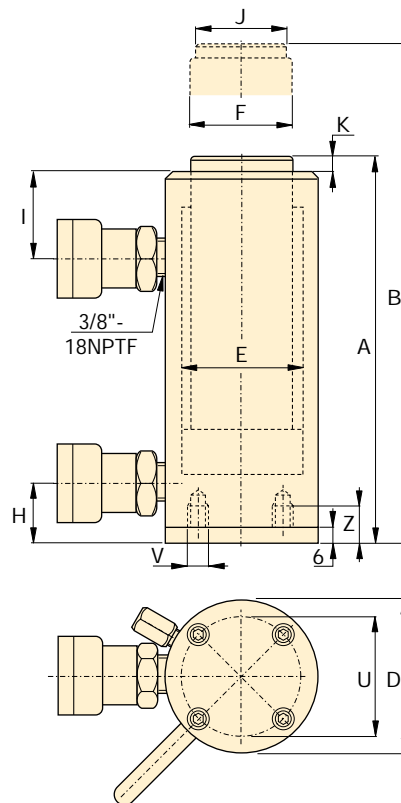


Steel Base Plate Mounting Holes

The mounting holes in these aluminium cylinders are designed for fixturing the steel base plate. They will not withstand the capacity of the cylinder. The steel base plate protects the cylinder from damage and should not be removed.

Steel Base Plate Mounting Holes			
Cylinder Model / Capacity ton	Bolt Circle U (mm)	Thread V (mm)	Thread Depth ¹⁾ Z (mm)
RAR-50	110,0	M6	12
RAR-100	165,0	M6	12
RAR-150	200,0	M6	12

¹⁾ Including Base Plate Height of 6 mm.



Other Cylinder Capacities

Double-Acting Aluminium Cylinders are also available in capacities of 20-30 ton.

Additional Stroke Lengths

All cylinder models are available with standard stroke lengths of 50, 100, 150, 200 and 250 mm. Visit www.enerpac.com for all cylinder models and details.



Lifting an Unbalanced Load

When lifting an unbalanced load Enerpac Integrated Lifting Systems can be the solution with multiple lift point capabilities from 4 to 64 points.

Page: 54

Collapsed Height A (mm)	Extended Height B (mm)	Outside Diameter D (mm)	Cylinder Bore Diameter E (mm)	Plunger Diameter F (mm)	Bottom to Advance Port H (mm)	Top to Retract Port I (mm)	Saddle Diameter J (mm)	Saddle Protrusion from Plunger K (mm)	(kg)	Model Number *
201	251	145	95,0	75,0	30	56	50	3	11,1	RAR-502
251	351	145	95,0	75,0	30	56	50	3	12,7	RAR-504
301	451	145	95,0	75,0	30	56	50	3	14,3	RAR-506
301	401	185	135,0	90,0	43	80	94	3	19,3	RAR-1004
351	501	185	135,0	90,0	43	80	94	3	22,2	RAR-1006
401	601	185	135,0	90,0	43	80	94	3	25,1	RAR-1008
348	498	230	170,0	110,0	38	75	113	3	33,2	RAR-1506