

Multifluid Hand Pumps

▼ Shown: **MP-110**



MP Series



Reservoir Capacity:

2 gal. (optional)

Flow at Rated Pressure:

.12-1.28 in³/stroke

Maximum Operating Pressure:

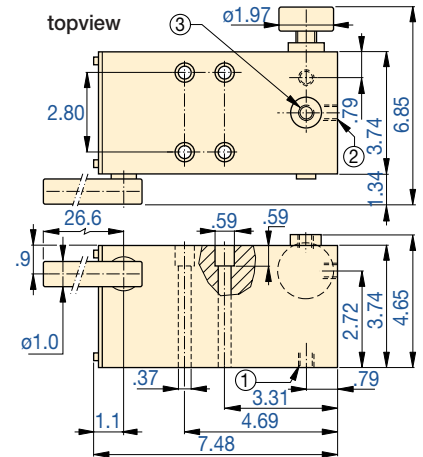
1,500-14,500 psi



Optional Reservoir Kit

The 2 gallon reservoir kit **MP-10T** includes tank with skid frame, top plate with reservoir seal, suction pipe and mounting bolts. Useable oil capacity is 1.5 gal.

- Superior corrosion resistance
- Impregnated aluminium anodized pump housing with stainless steel internal pumping components
- Standard Nitrile seals – excellent for demineralized water, oil/water emulsions, waterglycols, mineral oils, hydraulic fluids
- Optional EPDM seals for use with Skydrol® or brake fluids
- Two speed pumps up to 14,500 psi pressure
- Externally adjustable pressure relief valve
- 1/4" NPTF gauge port



MP-110, 350, 700, 1000

- ① Suction / Tank return port 3/8"-18 NPTF
- ② Pressure port 3/8"-18 NPTF
- ③ Gauge port 1/4"-18 NPTF

▼ MP-Series pumps are ideal for testing and filling applications.



MP-10T

| Pump Type | Usable Oil Capacity (in ³) | Model Number | Pressure Rating (psi) | | Oil Displacement per Stroke (in ³) | | Max. Handle Effort (lb) | Piston Stroke (in) | Weight (lbs) |
|-----------|----------------------------------------|--------------|-----------------------|-----------|------------------------------------------------|-----------|-------------------------|--------------------|--------------|
| | | | 1st stage | 2nd stage | 1st stage | 2nd stage | | | |
| Two Speed | * | MP-110 | 500 | 1500 | 3.2 | 1.28 | 99 | 1.04 | 14.5 |
| | * | MP-350 | 500 | 5000 | 3.2 | .43 | 99 | 1.04 | 14.5 |
| | * | MP-700 | 500 | 10,000 | 3.2 | .18 | 99 | 1.04 | 14.5 |
| | * | MP-1000 | 500 | 14,500 | 3.2 | .12 | 99 | 1.04 | 14.5 |

Note: MP-Pump includes .060 in. thick gasket for reservoir mounting.

* MP-Series pumps require the use of an external reservoir.